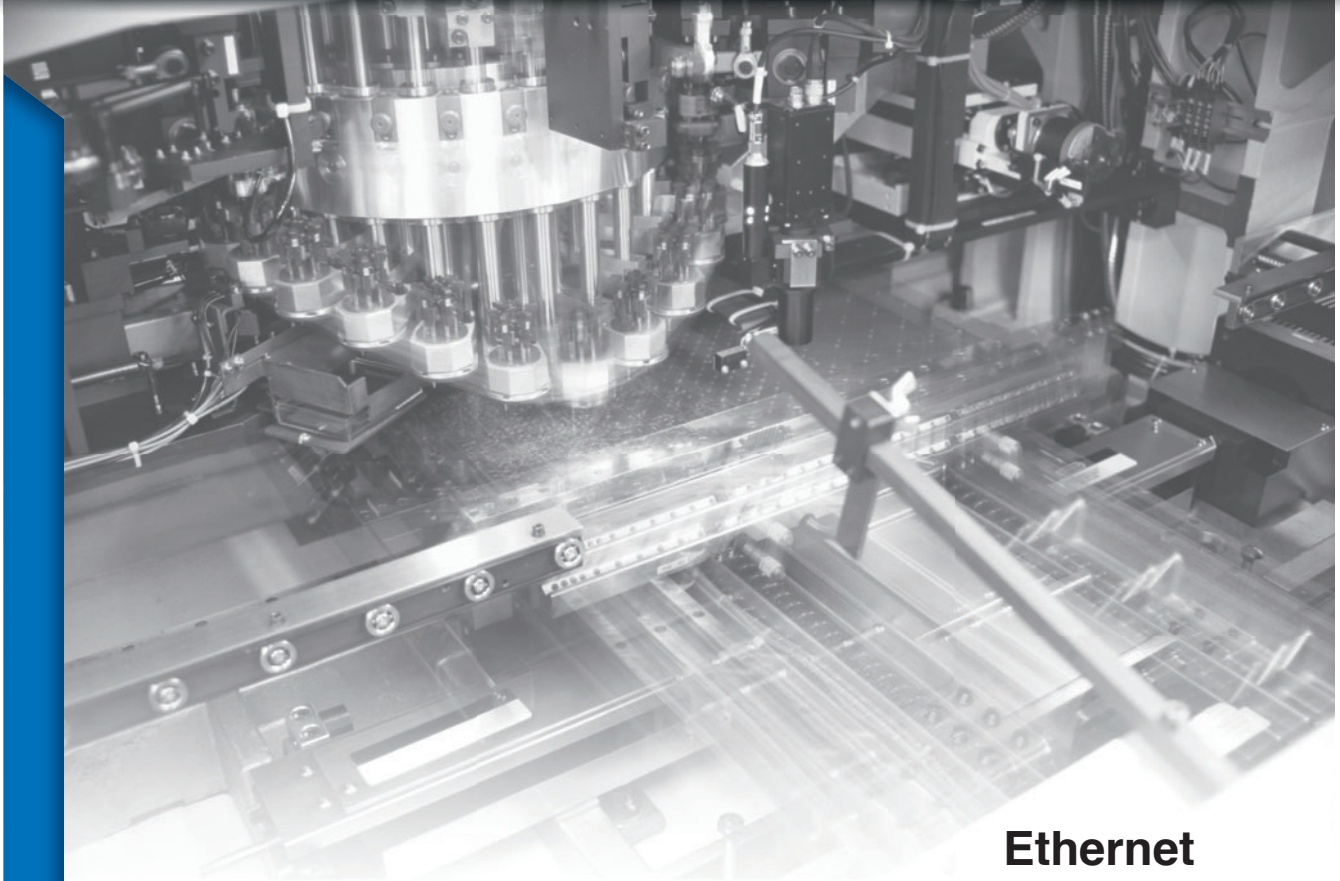
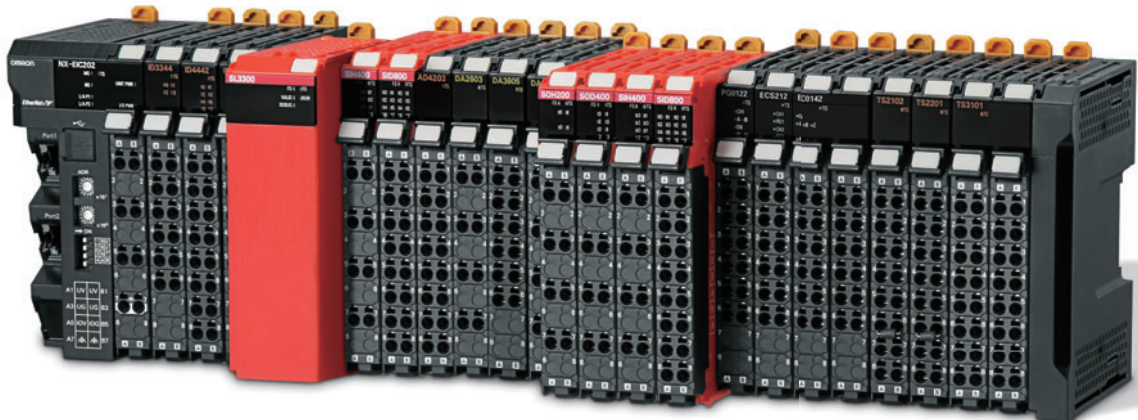


NX-series Safety Controller

Stand-alone System




Ethernet
EtherNet/IP™




Directly connects to any PLC for monitoring and status

The safety solution for any application

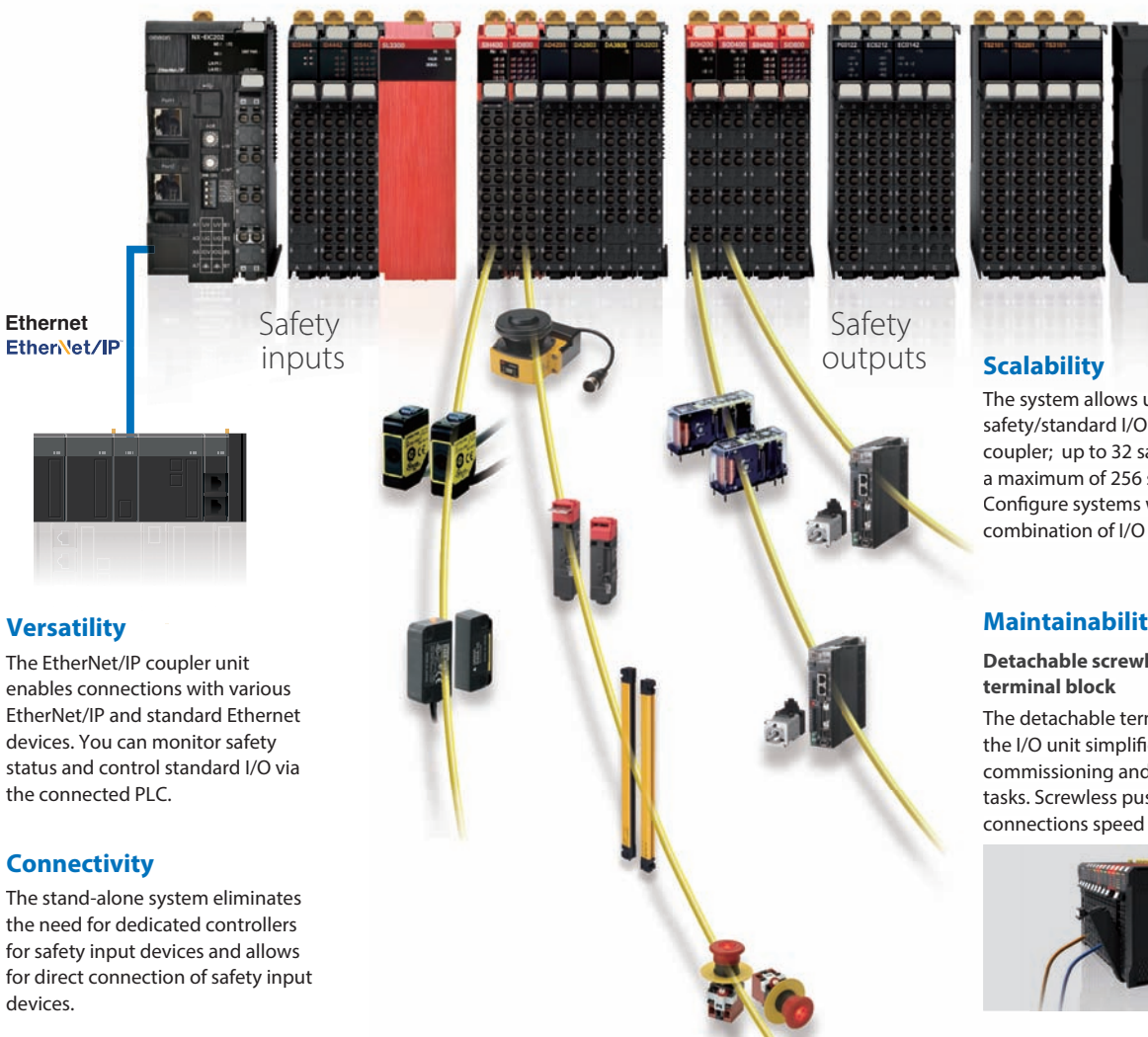
The NX Stand-alone Safety Controller is a powerful and robust Safety System that reaches the PLe according to EN 13849-1 and SIL3 according to IEC 61508. The EtherNet/IP coupler unit allows for connection to almost any PLC via EtherNet/IP™ or standard Ethernet communications. The flexible hardware allows the NX safety I/O units to be mixed in any combination with standard NX I/O units. Sysmac Studio software allows for configuration, programming, simulation and monitoring functionality.

Safety 

ISO 13849-1, Cat.4/PLe
IEC 61508 SIL3

PLC 

IEC 61131-2
IEC 61131-3
PLCopen® FBD



Ethernet
EtherNet/IP

Safety
inputs

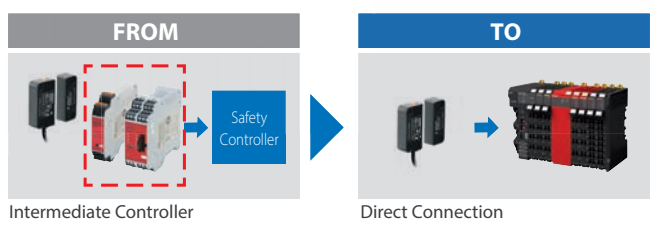
Safety
outputs

Scalability
The system allows up to 63 safety/standard I/O units per coupler; up to 32 safety I/O units to a maximum of 256 safety I/O signals. Configure systems with the right combination of I/O to optimize cost.

Versatility
The EtherNet/IP coupler unit enables connections with various EtherNet/IP and standard Ethernet devices. You can monitor safety status and control standard I/O via the connected PLC.

Maintainability
Detachable screwless terminal block
The detachable terminal block of the I/O unit simplifies the commissioning and maintenance tasks. Screwless push-in connections speed up installation.

Connectivity
The stand-alone system eliminates the need for dedicated controllers for safety input devices and allows for direct connection of safety input devices.



ACR (Automatic Configuration Restart)
When replacing a safety I/O Unit, just remove the old unit and insert a new unit. The setting data is automatically downloaded without using the programming software.

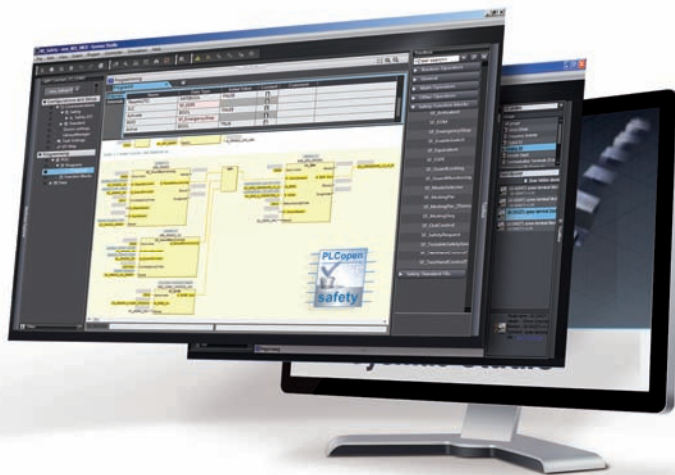


Flexibility and reusability of programming code

Standard programming with Sysmac Studio

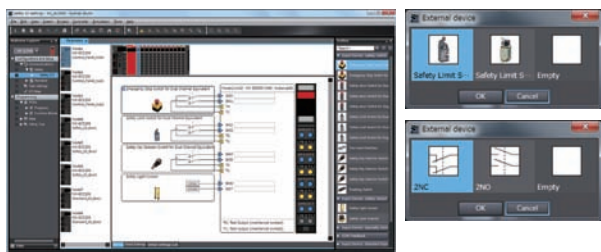
Sysmac Studio is compliant to the IEC 61131-3 standard and utilizes PLCopen® function blocks.

The safety controller provides a large program capacity of 512 KB (equivalent to more than 1,000 function blocks), visual setting of IO and automatic generating wiring diagram, variable style programming, reusable user-defined function blocks, offline simulation and simple automatic test.



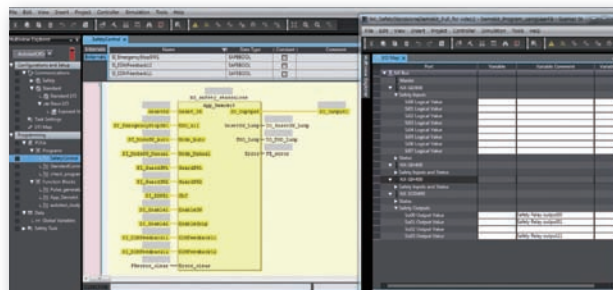
Visual setting of IO and automatic generating wiring diagram

By drag&drop the visual icon, the settings of I/Os are completed. Wiring diagrams are also automatically generated based on terminal settings. The wiring diagrams can be used for wiring check and Technical Construction Files (TCF).



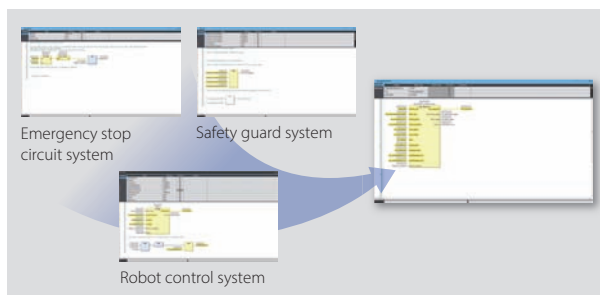
Programming with variables

Unlike previous programming with physical addresses, programming with variables does not depend on the hardware configuration. You can use the same code for the machine with a different hardware configuration by flexibly changing connections between variable names and hardware memory addresses.



User-defined function blocks

You can define your own function blocks. Repeat use of user-defined function blocks cuts programming time and maintains consistency of quality. Secure the code with password protection and add user-defined help files to make re-using functions safe and easy.



Offline simulation and simple automatic test

You can check operation on the Simulator without physical devices. Furthermore, basing on the relationship between inputs and outputs, program can be tested automatically.

This significantly reduces program modification and debugging time.



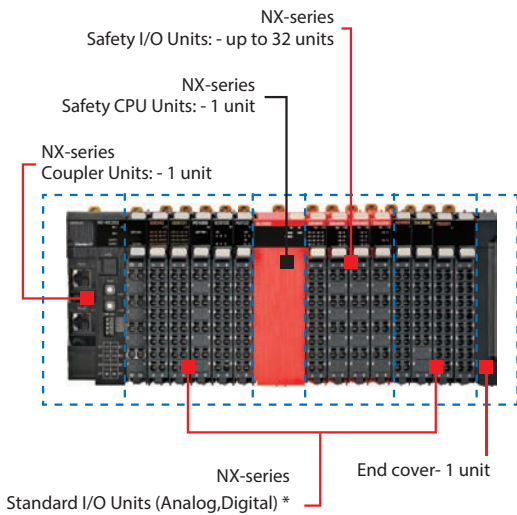
Sysmac is a trademark or registered trademark of OMRON Corporation in Japan and other countries for OMRON factory automation products.

STI is a trademark or registered trademark of OMRON Corporation in Japan and other countries. EtherNet/IP™ is a trademark of ODVA.

Other company names and product names in this document are the trademarks or registered trademarks of their respective companies.

The product photographs and figures that are used in this catalog may vary somewhat from the actual products. Microsoft product screen shot(s) reprinted with permission from Microsoft Corporation.

System configuration



* Refer to your OMRON website for details.

NX-series EtherNet/IP Coupler Unit

| NX Unit power consumption | Maximum I/O power supply current | Model |
|---------------------------|----------------------------------|------------------|
| 1.60 W max. | 10A | NX-EIC202 |

Accessory: End cover

Safety CPU Unit

| Maximum number of safety I/O points | Program capacity | Number of safety master connections | Model |
|-------------------------------------|------------------|-------------------------------------|------------------|
| 256 | 512KB | 32 | NX-SL3300 |

Safety Input Unit

| Number of safety input points | Number of test output points | Rated input voltage | OMRON special safety input devices | Model |
|-------------------------------|------------------------------|---------------------|------------------------------------|------------------|
| 4 points | 2 points | 24 VDC | Can be connected | NX-SIH400 |
| 8 points | 2 points | 24 VDC | Cannot be connected | NX-SID800 |

Safety Output Unit

| Number of safety output points | Internal I/O common | Rated input voltage | Maximum load current | Model |
|--------------------------------|-----------------------|---------------------|----------------------------|------------------|
| 2 points | Sourcing outputs(PNP) | 24 VDC | 2.0 A/point | NX-SOH200 |
| 4 points | Sourcing outputs(PNP) | 24 VDC | 0.5 A/point and 2.0 A/Unit | NX-SOD400 |

Automation Software Sysmac Studio

Licenses and DVDs are ordered separately.

| Product name | Specifications | | | Model |
|---|---|--------------------|---------------------------|-------------------------|
| | | Number of licenses | Media | |
| Sysmac Studio NX-I/O Edition *1 Ver.1.□□ | Sysmac Studio NX-I/O Edition is a limited license that provides selected functions required for EtherNet/IP Coupler settings. * This product is a license only. You need the Sysmac Studio Standard Edition DVD media to install it. | 1 license | — | SYSMAC-NE001L |
| Sysmac Studio Safety Edition *2 Ver.1.□□ | Sysmac Studio Safety Edition is a license including necessary setting functions for the safety control system. * This product is a license only. You need the Sysmac Studio Standard Edition DVD media to install it. | 1 license | — | SYSMAC-FE001L |
| Sysmac Studio Standard Edition *3 Ver.1.□□ | The Sysmac Studio is the software that provides an integrated environment for setting, programming, debugging and maintenance of machine automation controllers including the NJ/NX-series CPU Units, NY-series Industrial PC, EtherCAT Slave, and the HMI. Sysmac Studio runs on the following OS. *4 Windows 7(32-bit/64-bit version)/Windows 8.1(32-bit/64-bit version)/ Windows 10(32-bit/64-bit version)/Windows 11(64-bit version) | - (Media only) | Sysmac Studio (32bit) DVD | SYSMAC-SE200D |
| | | - (Media only) | Sysmac Studio (64bit) DVD | SYSMAC-SE200D-64 |

Note: For details of the Automation Software Sysmac Studio, refer to your local OMRON website.

*1. With the NX-I/O Edition, you can use only the setup functions for EtherNet/IP Coupler.

*2. Safety Edition can be used with Communication Control Unit and EtherNet/IP Coupler Unit.

*3. The Sysmac Studio Standard Edition with license(s) (SYSMAC-SE□□□L) provides functions of the NX-I/O Edition (SYSMAC-NE001L) and functions of the Safety Edition (SYSMAC-FE001L).

With the Sysmac Studio Standard Edition with license(s) (SYSMAC-SE□□□L) version 1.10 or higher, you can use the setup functions for the EtherNet/IP Coupler.

*4. Model "SYSMAC-SE200D-64" runs on Windows 10 (64bit) or higher.

Note: Do not use this document to operate the Unit.

OMRON Corporation Industrial Automation Company

Kyoto, JAPAN

Contact : www.ia.omron.com

Regional Headquarters

OMRON EUROPE B.V.

Wegalaan 67-69, 2132 JD Hoofddorp
The Netherlands
Tel: (31) 2356-81-300 Fax: (31) 2356-81-388

OMRON ELECTRONICS LLC

2895 Greenspoint Parkway, Suite 200
Hoffman Estates, IL 60169 U.S.A.
Tel: (1) 847-843-7900 Fax: (1) 847-843-7787

OMRON ASIA PACIFIC PTE. LTD.

438B Alexandra Road, #08-01/02 Alexandra
Technopark, Singapore 119968
Tel: (65) 6835-3011 Fax: (65) 6835-3011

OMRON (CHINA) CO., LTD.

Room 2211, Bank of China Tower,
200 Yin Cheng Zhong Road,
PuDong New Area, Shanghai, 200120, China
Tel: (86) 21-6023-0333 Fax: (86) 21-5037-2388

Authorized Distributor:

©OMRON Corporation 2016-2023 All Rights Reserved.
In the interest of product improvement,
specifications are subject to change without notice.

CSM_1_7

Cat. No. F100-E1-04 0823 (0316)